



mandayen

Annual Bull Sale

18TH FEBRUARY 2026

“8 Mile” Sale Complex, Keith, SA

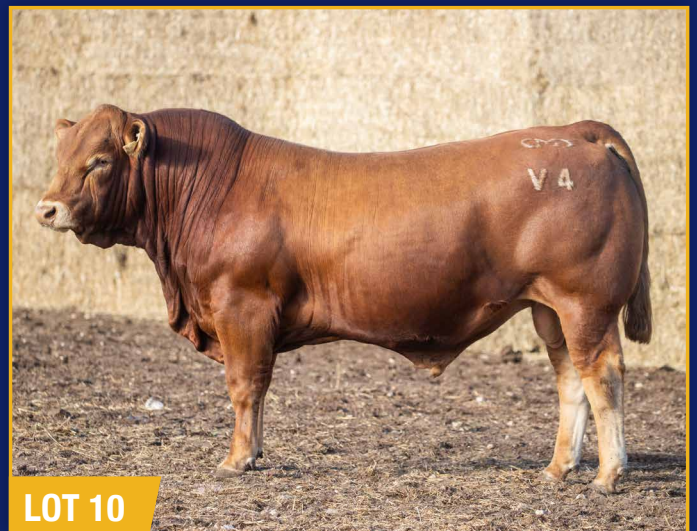
20 LIMOUSIN BULLS | 65 ANGUS BULLS



YOUR DESTINATION FOR INDUSTRY RELEVANT GENETICS

mandayen.com.au

YOUR DESTINATION FOR INDUSTRY RELEVANT GENETICS



MD
mandayen



mandayen



Tom Dennis

0427 975 207

Ronnie Dix

0408 400 870

Ross Milne

0408 057 558 (vic)



Jono Spence

0427 084 951

Rodney Dix

0429 818 490

Luke Schrieber

0429 817 274



Dick Whale

0427 697 968

21st Annual Limousin & 10th Angus Bull Sale

WEDNESDAY 18th FEBRUARY 2026

1:30 pm (ACDT)

📍 On Property at the "Eight Mile Saleyard", Keith, SA

FIELD DAY: 9th February

Upper Southeast at 8 Mile Sale Complex

OFFERING HIGH QUALITY HERD SIRE PROSPECTS

Limousin Bulls - Lots 1 - 19

Angus Bulls - Lots 25 - 88

Bulls on offer can be
viewed on AuctionsPlus
or the Mandayen website.



Stud manager: Damian Gommers

M 0418 824 799

E mandayen@outlook.com

P (08) 8535 8259

413 Flagstaff Road, Brinkley, SA 5253

Further sale information at centre of catalogue

mandayen.com.au

Welcome

Our 21st Annual Bull Sale will once again be held at our Keith property at the Eight Mile Sale Complex. Considerable effort has gone into sourcing top-line genetics from both Australia and overseas—genetics that consistently demonstrate muscling, softness, doing ability, structural correctness, and quiet dispositions. These are the traits for which Mandayen genetics have become well recognised.

The past year has been a challenging one for livestock producers, with one of the driest seasons on record across southern Australia. Fortunately, much-needed rainfall later in the year, combined with an extended spring, allowed the cattle to perform well and truly express their strong commercial attributes.

The Limousin bulls on offer are a selection of AI and home-bred sires, with selection emphasis firmly placed on key economic traits: structural soundness, softness, muscle, and docility. Sires represented include B-Bar Carhartt 71H, whose progeny have proven to be well muscled, long, consistent in type, and an excellent heifer-friendly option. Flemington Next Level progeny are showing a little more frame, while still maintaining softness and muscle. Mandayen Xtra Loyal S12 progeny are shining through with added length, thickness, finer bone, and overall soundness. Other sires used include New Life Henry, Mandayen Endeavour S3, Anchor B Gold Rush, and Ruby Park Naradale.

This year, we are pleased to welcome Morrisvale Limousins as part of the Limousin offering. These bulls have been run under the same conditions and display the same attributes we strive for in our own breeding program.

For those wishing to inspect the bulls prior to sale, our annual field day will be held on Monday, 9th February at the Eight Mile Sale Complex, 365 Dark Island Well Road, Keith. Inspections are also available by appointment for your convenience.

We sincerely thank our sale agents, Elders and Spence Dix & Co, for their continued assistance and support. If you are unable to attend on sale day and wish to purchase, we encourage you to contact one of their representatives to place an order or arrange phone bidding. The auction will also be interfaced online through AuctionsPlus, with videos of each lot available. We also appreciate the ongoing support of agents from other firms.

Most importantly, we thank everyone who has supported our program over the years, through both good and challenging times. We wish all prospective purchasers the very best on sale day and are confident our cattle will perform exceptionally well for their new owners.

Damian Gommers and family
MANDAYEN LIMOUSIN & ANGUS



YOUR DESTINATION FOR INDUSTRY RELEVANT GENETICS

Welcome

At Morrisvale Limousins we thrive to be a leader in producing quality genetics that perform in the industry year in year out. Upon Relocation to South Australia from Western Australia to manage Mandayen Livestock PTY Ltd in July 2024, we reduced from 125 to 30 proven females with lines that have stood the test from 26yrs of stud breeding. The cattle are run within the Mandayen operation daily, our breeding philosophies are the same and the cattle are performing as we expected in their new surround's.

This year we are offering two black sires that are commercially relevant, both by AI (East Coast Hector and JYF Gentry). These bulls have run with the Mandayen contemporary group and continue to impress with their structural soundness, muscles expression, softness, doing ability and docility. They sell as lot 14 and 15.

We thank the Gommers family for the sale invitation and look forward to watching our cattle perform in these conditions.

For those wishing to inspect the bulls prior to sale, our annual field day will be held on Monday, 9th February at the Eight Mile Sale Complex, 365 Dark Island Well Road, Keith. Inspections are also available by appointment for your convenience.

We sincerely thank our sale agents, Elders and Spence Dix & Co, for their continued assistance and support. If you are unable to attend on sale

day and wish to purchase, we encourage you to contact one of their representatives to place an order or arrange phone bidding. The auction will also be interfaced online through AuctionsPlus, with videos of each lot available. We also appreciate the ongoing support of agents from other firms.

Most importantly, we thank everyone who has supported our program over the years, through both good and challenging times. We wish all prospective purchasers the very best on sale day and are confident our cattle will perform exceptionally well for their new owners.

James and Casey Morris

MORRISVALE LIMOUSINS – 0404 030 137



QUALITY OVER QUANTITY

EXPLANATION OF THE SUFFIXES TO ANIMAL NAMES IN THE CATALOGUE

LIMOUSIN SUFFIXES			
Trait	SUFFIX	STATUS	STATUS ARRIVED AT BY Details available for individual animals on Limousin database Animal Details page
Horn status	PP	Homozygous polled	DNA test confirmed homozygous polled, or Animal is homozygous polled by pedigree as both parents are confirmed homozygous polled, or Animal is confirmed homozygous polled by progeny analysis process.
	P	Polled	DNA test confirmed heterozygous polled, or Animal is untested, information was provided by breeder.
	Ps	Polled with Scurs	Identified by details provided by breeder at time of registration, or DNA test confirmed heterozygous polled and breeder information indicates animal shows scurs.
	H	Horned	DNA test confirmed horned, or Animal is untested, information was provided by breeder.
Coat colour	BB	Homozygous black	DNA test confirmed homozygous black, or Animal is homozygous black by pedigree as both parents are confirmed homozygous black. Animal is confirmed homozygous black by progeny analysis process.
	B	Black	DNA test confirmed heterozygous black, or Animal is untested, information provided by breeder.
	R	Red	Identified by details provided by the breeder.
	A	Apricot	Identified by details provided by the breeder.
	O	Other	Identified by details provided by the breeder.
F94L gene	AA	F94L 2 copies	DNA test confirmed animal carries 2 copies of the F94L gene, or Animal carries 2 copies of the F94L gene as both parents carry 2 copies of the F94L gene.
	AC	F94L 1 copies	DNA test confirmed animal carries 1 copy of the F94L gene.
	CC	F94L 0 copies	DNA test confirmed animal carries no copies of the F94L gene.
	U	F94L Status unknown	Animal is untested and parent status is unknown.
Lim-Flex	LF	Lim-Flex	Animal is identified as Lim-Flex by pedigree details in line with ALBS regulations.

EXPLANATION OF ESTIMATED BREEDING VALUES

An Estimated Breeding Value (EBV) is an estimate of the genetic merit of that animal for each trait measured.

EBVs are provided for the following traits:

Calving Ease Direct: estimates the differences in the ability of a sire's calves to be born unassisted from a 2-year-old heifer.

Gestation Length: ranks sires for the time between conception and the birth of a calf. Shorter gestation is indicated by negative EBVs and longer by positive EBVs.

Birth Weight: indicates the genetic potential for birth weight. Positive EBVs indicate higher birth weights and negative EBVs indicate lower birth weights of progeny.

200, 400 & 600 Day Weight: give us an estimation of the animal's genetic potential for growth.

Mature Cow Weight: estimates differences between animals in live weights of cows at 5 years of age.

Milk: a key component of fast growth to weaning is the dam's maternal performance. A bull with a high milk EBV should produce daughters which milk well.

Scrotal Size: indicates whether the bull will produce sons with above average or below average scrotal sizes.

Carcase Weight: ranks animals for carcass weight.

Eye Muscle Area: ranks animals for eye muscle area measured at the 12th rib on a 300kg carcass.

Rib Fat: ranks animals for rib fat depth at the 12th rib on a 300kg carcass.

Rump Fat: ranks animals for fat depth at the p8 site on the rump on a 300kg carcass.

Intra Muscular Fat: ranks animals for the percentage of intramuscular fat at the 12th rib of a 300kg carcass.

Docility: is expressed as the increase or decrease in the percentage of progeny that will be scored as docile (score 1 or 2). Positive EBVs indicate a higher proportion of progeny that will be scored as docile and negative EBVs indicate a lower percentage of progeny being scored as docile.

Comparing EBVs: The EBVs for Limousins cannot be compared with EBVs for animal of other breeds. They should be compared with the current average EBV for the Limousin breed shown below.

Breed Average EBVs for 2021 Born Calves														
CED	GL	BWt	200	400	600	MCW	MLK	SS	CWT	EMA	RIB	RMP	IMF	DOC
+0.5	-2.1	+1.7	+21	+35	+48	+49	+7	+1.1	+30	+1.8	+0.0	-0.1	+0.0	+42

Accuracies: Accuracies are presented with each EBV and give an indication of the amount of information that has been used in the calculation of that EBV. The higher the accuracy the lower the likelihood of change in the animal's EBV as more information is analysed for that animal and its relatives.

Disclaimer: The Estimated Breeding Values (EBVs) contained within this sale catalogue were compiled by the Agricultural Business Research Institute (ABRI) from the data supplied by breeders. Neither the Australian Limousin Breeders' Society or ABRI oversee or audit the collection of this data.



2026 Limousin Reference Sires

RS MANDAYEN XTRA LOYAL S12 (PP BB U)

Tattoo: MDNPS12

Born: 1

Grade: Pure

Colour: Homo. Black (by DNA test)

Horn: Homo. Polled (by DNA test)

Proto: (PF)

RUNL STETSON 850S (IMUPB850) (PP BB AA)

WULFS WILLARD 5115W (IMUPE762) (PP B U)

RUNL XTRA-LOYAL 644 X (IMUPF141) (PP BB U)

WULFS COMPLIANT K687C (IMUPL687) (PP B AA)

RUNL 294S (PEDPB1971) (P B U)

WULFS SOLOIST 6284S (PEDPB9126) (PP R U)

SIRE: MANDAYEN XTRA LOYAL P149 (PP BB AA)

DAM: MANDAYEN JILL Q079 (P B U)

SYES BACKSTAGE 466B (IMUPK466) (PP BB AA)

HUNT MR JOCK 44J (IMUPU44) (P B AA)

MANDAYEN ABIGAIL M175 (MDNPM175) (P BB U)

MANDAYEN JILL E1406 (MDNPE1406) (P A U)

MANDAYEN ABIGAIL F1614 (MDNPF1614) (H BB U)

RAMORNIE JILL T10 (SLTPT10) (P A U)

December 2025 Southern Limousin Single-Step BREEDPLAN

CE	B.Wt	Milk	200 Wt	400 Wt	600 Wt	Milk	Scrotal	Carc WT	EMA	Rib Fat	Rump Fat	RBY	IMF	DOC
5	0.4	18	27	39	52	18	0.7	45	4.1	0.8	1.5	0.4	0.5	65
52%	87%	48%	82%	78%	80%	48%	60%	58%	39%	61%	59%	51%	49%	75%

Traits Observed: GL,BWT,200WT,DOC,Genomics

RS MANDAYEN ENDEAVOUR S3 (PP B U)

Tattoo: MDNPS3

Born: 9/06/2021

Grade: Pure

Colour: Black
Black (by DNA test)

Horn: Homo. Polled
(by DNA test)

Proto: (P F)

WULFS TAILOR MADE 2107T (PEDPB7947) (Ps B U)

WULFS ZANDER X921Z (IMUPH921) (PP B U)

RLF YARDLEY 601Y (IMCPG601) (PP BB AA)

MANDAYEN LIQUID GOLD L33 (MDNPL33) (P A U)

RLF 406W (PEDPE8885) (P B U)

MANDAYEN WINIFRED D1136 (MDNPD1136) (H B U)

SIRE: BALAMORE ENDEAVOR 701E (PP BB AA)

DAM: MANDAYEN KNOCKOUT Q086 (P R U)

WULFS SPRING LOADED 3158S (IMUPB3158) (PP B U)

MANDAYEN FREIGHTLINER F1616 (MDNPF1616) (P A U)

CLARKS AFFECTIVE KISS (PEDPCDC137A) (P B U)

MANDAYEN KNOCKOUT J2571 (MDNPJ2571) (P R U)

DKC UNFORGETTABLE KISS (PEDPCDC76U) (P R U)

MANDAYEN KNOCKOUT E1499 (MDNPE1499) (P R U)

December 2025 Southern Limousin Single-Step BREEDPLAN

CE	B.Wt	Milk	200 Wt	400 Wt	600 Wt	Milk	Scrotal	Carc WT	EMA	Rib Fat	Rump Fat	RBY	IMF	DOC
-1.2	1.8	7	35	55	72	7	1	47	4.9	0.3	0.6	1.4	0.1	69
51%	82%	45%	77%	73%	74%	45%	57%	53%	42%	55%	53%	45%	45%	70%

Traits Observed: GL,BWT,200WT,DOC,Genomics

RS ANCHOR B GOLD RUSH 48G (PP R AA)

Tattoo:IMCPJBH48G

Born: 14/02/2019

Grade: Pure

Colour: Red

Horn: Homo. Polled
(by DNA test)

Proto: (P N)

IVY'S MARKSMAN HTZ 10Z (IMCPH10) (PP A U)

WULFS TIBON T750T (PEDPC750) (P A U)

IVY'S BUBBA WATSON HTZ24B (IMCPK24) (PP A AA)

ANCHOR B "THE BOSS" (PEDPMBH233Y) (P R U)

IVYS UNIQUE PERFECTION 3U (PEDPD525) (P B U)

ANCHOR B URBAN GIRL (PEDPD624) (P A U)

SIRE: B BAR AUSTIN HEALY 4D ET (P R U)

DAM: ANCHOR B BAILEY 21B (P R U)

ROMN MADE TO ORDER (IMUPE9608) (P A AC)

ANCHOR B GREAT WEST (PEDPE951) (P B U)

B BAR POLLED UNIQUE (PEDPBEA114U) (P R U)

ANCHOR B ZAHARA (PEDPJBH5Z) (P R U)

B BAR POLLED NICOLE (PEDPBEA4N) (P R U)

ANCHOR B RIKKI 41X (PEDPJBH41X) (P B U)

December 2025 Southern Limousin Single-Step BREEDPLAN

CE	B.Wt	Milk	200 Wt	400 Wt	600 Wt	Milk	Scrotal	Carc WT	EMA	Rib Fat	Rump Fat	RBY	IMF	DOC
-3.4	-0.2	6	21	42	45	6	1.1	42	5.7	0.2	0.5	1.6	-0.1	56
66%	90%	42%	86%	81%	80%	42%	70%	60%	49%	61%	59%	49%	49%	85%

Traits Observed: Genomics

RS NEW LIFE HENRY (PP R AA)

Tattoo: IMCPNLL32H

Born: 21/08/2020

Grade: Pure

Colour: Red

Horn: Homo. Polled
(by DNA test)

Proto: (P N)

HUNT MR JOCK 44J (IMUPU44) (P B AA)

TMF TANKARD 206T (PEDPC9773) (P A U)

WULFS AMAZING BULL T341A (IMUPJ341) (PP A AA)

TMF WESTWOOD 505W (IMCPE6387) (PP A AA)

WULFS ULTRA DIAMOND 8571U (PEDPD648) (P A U)

TOP MEADOW 902P (PEDPZ9772) (P A U)

SIRE: DC EVINRUDE 56E (P R U)

DAM: TMF MISS 3Y (P R U)

RPY PAYNES RANGER 20R (PEDPRPY20R) (P B U)

WULFS KLINT 5874K (IMUPV5874) (PP R U)

TURANVILLE DC TEAR DROP (PEDPCJF221T) (P R U)

TOP MEADOW 732S (PEDPTMF732S) (P R U)

DC POLLED NILEKKA (PEDPCJF97N) (P R U)

December 2025 Southern Limousin Single-Step BREEDPLAN

CE	B.Wt	Milk	200 Wt	400 Wt	600 Wt	Milk	Scrotal	Carc WT	EMA	Rib Fat	Rump Fat	RBY	IMF	DOC
4.1	-1.1	10	17	34	54	10	1.4	36	1.3	-0.1	0.1	0.5	0.6	48
46%	80%	39%	77%	72%	72%	39%	47%	50%	37%	47%	45	37%	37%	76%

Traits Observed: Genomics

2026 Limousin Reference Sires

RS B-BAR CARHARTT 71H (PP R AA)

Tattoo: IMCPUZX71H

Born: 5

Grade: Pure

Colour: Red

Horn:Homo. Polled

Proto: (PN)

MRL X-RATED 014X (UENP014X)

IVY'S MARKSMAN HTZ 10Z (IMCPH10) (PP A U)

COLE ARCHITECT 08A (IMUPA08) (PP B U)

IVY'S BUBBA WATSON HTZ24B (IMCPK24) (PP A AA)

COLE MISS LODESTAR U826 (IMUPU826) (P B U)

IVYS UNIQUE PERFECTION 3U (PEDPD525) (P B U)

SIRE: RPY PAYNES CRACKER 17E (PP R AA)

DAM: B BAR NICOLE 11D (P P B U)

CHTT WORK TIME 4925W (PEDPCHTT4925W) (P R U)

EDW BEACH BODY (PEDPEDW783B) (P R U)

TOP MEADOW 24L (PEDPW268) (P U)

B BAR LORALEE 73B (PEDP73B) (P B U)

December 2025 Southern Limousin Single-Step BREEDPLAN														
CE	B.Wt	Milk	200 Wt	400 Wt	600 Wt	Milk	Scrotal	Carc WT	EMA	Rib Fat	Rump Fat	RBY	IMF	DOC
13.2	-2.7	5	19	27	40	5	1.6	44	4.7	0.5	1.1	0.9	0.2	53
66%	90%	53%	86%	85%	86%	53%	74%	66%	49%	66%	63%	54%	55%	87%

Traits Observed: G e n o m i c s

RS EAST COAST HECTOR 009H (PP BB AA)

Tattoo: IMCPECL009H

Born: 4/01/2020

Grade: Pure

Colour: Homo.
Black (by DNA test)

Horn: Homo. Polled
(by DNA test)

Proto: (P N)

WULFS TAILOR MADE 2107T (PEDPB7947) (Ps B U)

MARYVALE JOURNEYMAN J455 (AMSPJ455) (PP A U)

RLF YARDLEY 601Y (IMCPG601) (PP BB AA)

MORRISVALE LUMBERJACK (MRJPL4) (PP A AA)

RLF 406W (PEDPE8885) (P B U)

MARYVALE JOSEPHINE J302 (AMSPJ302) (P A U)

SIRE: BALAMORE ENDEAVOR 701E (PP BB AA)

DAM: EAST COAST FLOWER 829F (P B U)

WULFS SPRING LOADED 3158S (IMUPB3158) (PP B U)

CFLX WILD CARD (PEDPD533) (PP BB U)

CLARKS AFFECTIVE KISS (PEDPCDC137A) (P B U)

RPY PAYNES BLOSSOM 20B (IMCPRPY20B) (P B U)

DKC UNFORGETTABLE KISS (PEDPCDC76U) (P R U)

FBR STORM 3S (IMCPFBR3S) (P B U)

December 2025 Southern Limousin Single-Step BREEDPLAN														
CE	B.Wt	Milk	200 Wt	400 Wt	600 Wt	Milk	Scrotal	Carc WT	EMA	Rib Fat	Rump Fat	RBY	IMF	DOC
-3.4	0	6	22	42	49	6	1.8	42	6.5	0.5	0.9	1.7	-0.2	64
68%	92%	44%	90%	86%	85%	44%	79%	67%	55%	68%	66%	55%	55%	91%

Traits Observed: G e n o m i c s

RS JYF GENTRY 507G (PP B AA)

Tattoo:IMCPJYF507G

Born: 15/09/2019

Grade: Pure

Colour: Black

Horn: Homo. Polled
(by DNA test)

Proto: (P N)

RLF YARDLEY 601Y (IMCPG601) (PP BB AA)

HUNT MR JOCK 44J (IMUPU44) (P B AA)

PLNS POLLED ABRAHAM (PEDP25A) (PP B U)

KING WULF 8274Y (PEDP8274Y) (Ps B U)

PLNS POLLED YAKIRA 25Y (PEDP25Y) (P B U)

WULFS UPPITY TALK 8274U (PEDP8274U) (P B U)

SIRE: PLNS POLLED EXECUTIONER 19E (P B U)

DAM: JYF BARCODE 55B (P R U)

TMF TRAVELER 742T (PEDPC5898) (P B U)

TMF UPTOWN 618U (PEDP618U) (P B U)

TMF MISS 574X (PEDP574X) (P B U)

JYF231X (PEDP231X) (P R U)

TMF MISS 623T (IMUP623T) (P B U)

TMF MISS 175U (PEDP157U) (P R U)

December 2025 Southern Limousin Single-Step BREEDPLAN														
CE	B.Wt	Milk	200 Wt	400 Wt	600 Wt	Milk	Scrotal	Carc WT	EMA	Rib Fat	Rump Fat	RBY	IMF	DOC
-3.4	-0.2	6	21	42	45	6	1.1	42	5.7	0.2	0.5	1.6	-0.1	56
66%	90%	42%	86%	81%	80%	42%	70%	60%	49%	61%	59%	49%	49%	85%

Traits Observed: Genomics

RS FLEMINGTON NEXT LEVEL N40 (PP A AA)

Tattoo: FPPN40

Born: 21/08/2017

Grade: Pure

Colour: Apricot

Horn: Homo. Polled
(by DNA test)

Proto: (P N)

ROMN TUFF ENUFF 103T (IMUPC103) (PP R AC)

WULFS TITUS 2149T (IMUPT2149) (P B U)

IVY'S MARKSMAN HTZ 10Z (IMCPH10) (PP A U)

PRL WULFS HIGH VOLTAGE (PRLPH42) (P A AC)

IVY'S XPECT THE BEST 47X (PEDPPF416) (PP U)

WULFS READY MADE 5093R (IMUPA5093) (P A U)

SIRE: IVY'S BUBBA WATSON HTZ24B (PP A AA)

DAM: BIRUBI LUNETTE L81 (PP A AC)

AUTO DOLLAR GENERAL 122R (IMUPA122) (PP BB CC)

DONNA VALLEY POLL DICTATOR (MGWPD470) (PP AAC)

TURANVILLE IVYS UNIQUE PERFECTION 3U (PEDPD525) (P B U)

BIRUBI GEORGETTE G208 (MATPG208) (PP A U)

IVY POLLED NEAR PERFECT4N (IMCPY4) (P A U)

BIRUBI BEWITCH B095 (MATPB95) (PP A U)

December 2025 Southern Limousin Single-Step BREEDPLAN														
CE	B.Wt	Milk	200 Wt	400 Wt	600 Wt	Milk	Scrotal	Carc WT	EMA	Rib Fat	Rump Fat	RBY	IMF	DOC
0.6	1.6	3	29	51	75	3	2.3	43	3.4	0.5	0.9	0.5	0.1	32
75%	95%	82%	93%	93%	93%	82%	89%	79%	68%	82%	10	71%	73%	95%

Traits Observed: GL,BWT,200WT,400WT(x2),SS,FAT,EMA,IMF,DOC,Genomics

RS RUBY PARK NARADALE (PP BB AA)

Horn: Homo Polled Proto: (PN)

Tattoo: RPLPN11 Born: 9 Grade: Pure Colour: Homo. Black

DVFC COOKIE MONSTER 108H (IMUPT108) (P B AA)
WATERFORD MONSTER MAGIC (HASPA2) (P B U)
LLOYD'S BLACK POLLED QUEST (DLLPQ449) (P B U)

TOMAHAWKS BLACK FRONTIER 117C (IMUPN117) (PP BB U)
TIMOR BLACK POLL DREAM (TRPD19) (P B U)
TIMOR HANNA 34 (TRPA735) (H R U)

SIRE: MANALI FICTION F53 (P BB AA)

DAM: OAKVALE FLOSSIE (P B AA)

CHAZ FIRST CHOICE 6004F (IMUPR6004) (PP BB AA)
TURANVILLE BARBARA Y9 (DHRPY9) (P B U)
TURANVILLE BARBARA U1 (DHRPU1) (P A U)

PREMIER S037 (PREPS37) (P B U)
PREMIER BLACK ICE X40 (PREPX40) (P B U)
PREMIER BLACK ICE U52 (PREPU52) (P B U)

December 2025 Southern Limousin Single-Step BREEDPLAN														
CE	B.Wt	Milk	200 Wt	400 Wt	600 Wt	Milk	Scrotal	Carc WT	EMA	Rib Fat	Rump Fat	RBY	IMF	DOC
4.1	1.7	9	20	23	44	9	1.4	33	3.4	-0.4	-0.8	2	-0.3	9
57%	88%	53%	86%	83%	84%	53%	74%	65%	43%	67%	65%	56%	55%	86%

Traits Observed: CE,BWT,200WT,400WT,600WT(x2),SS,FAT,EMA,IMF,DOC,Genomics



B-Bar Carhartt



Flemington Next Level N40



JYF Gentry

1 MANDAYEN CARHARTT V12 (PP A AA)

Tattoo: MDNPV12

Born: 26/05/2024

Grade: Pure

Colour: Apricot

Horn: Homo. Polled
(by DNA test)

Proto: (PN)

RPY PAYNES CRACKER 17E (IMCP17E) (PP R AA)

SUMMIT PAYDAY H28 (HLGPH28) (P A U)

SIRE: B-BAR CARHARTT 71H (PP R AA)

DAM: MANDAYEN JILL M157 (P A U)

B BAR NICOLE 11D (PEDP11D) (PP B U)

MANDAYEN JILL E1413 (MDNPE1413) (P A U)

December 2025 Southern Limousin Single-Step BREEDPLAN														
CE	B.Wt	Milk	200 Wt	400 Wt	600 Wt	Milk	Scrotal	Carc WT	EMA	Rib Fat	Rump Fat	RBV	IMF	DOC
8.2	-0.4	8	23	32	58	8	1.9	40	3.3	-0.3	-0.3	1.4	0	57
43%	72%	48%	68%	68%	73%	48%	54%	53%	45%	55%	54%	47%	44%	59%

Traits Observed: GL,CE,BWT,200WT,400WT,600WT,FAT,EMA,IMF,DOC,Genomics

This Homo Polled son of B Bar Carhartt is a larger frame bull. Would be an ideal vealer bull with lots of power, length and nice and quiet. A potential heifer option.

Purchaser: \$.....

2 MANDAYEN HENRY V38 (PP A AA)

Tattoo: MDNPV38

Born: 31/05/2024

Grade: Pure

Colour: Apricot

Horn: Homo. Polled
(by DNA test)

Proto: (PN)

DC EVINRUDE 56E (PEDPUXJ56E) (P R U)

MANDAYEN FORTUNE F1606 (MDNPF1606) (PP B U)

SIRE: NEW LIFE HENRY (PP R AA)

DAM: MANDAYEN JILL S56 (PP A U)

TMF MISS 3Y (PEDPTMF3Y) (P R U)

MANDAYEN JILL C858 (MDNPC858) (P B U)

December 2025 Southern Limousin Single-Step BREEDPLAN														
CE	B.Wt	Milk	200 Wt	400 Wt	600 Wt	Milk	Scrotal	Carc WT	EMA	Rib Fat	Rump Fat	RBV	IMF	DOC
2	0.1	9	17	27	42	9	1.1	25	0.8	0.5	0.9	-0.6	0.8	41
35%	70%	40%	65%	65%	70%	40%	45%	49%	41%	49%	49%	42%	38%	55%

Traits Observed: GL,CE,BWT,200WT,400WT,600WT,FAT,EMA,IMF,DOC,Genomics

A Homo Polled, potential heifer option by New Life Henry. He is an early maturing type with great length and strength of spine. Clean in the sheath.

Purchaser: \$.....

3 MANDAYEN XTRA LOYAL V94 (P B AA)

Tattoo: MDNPV94

Born: 11/07/2024

Grade: Pure

Colour: Hetero Black
(by DNA test)

Horn: Hetero Polled
(by DNA test)

Proto: (PN)

MANDAYEN XTRA LOYAL P149 (MDNPP149) (PP BB AA)

MANDAYEN ENERGISER H2076 (MDNPH2076) (PP A U)

SIRE: MANDAYEN XTRA LOYAL S12 (PP BB U)

DAM: MANDAYEN STARR M50 (P A U)

MANDAYEN JILL Q079 (MDNPQ79) (P B U)

MANDAYEN STARR G1827 (MDNPG1827) (P B U)

December 2025 Southern Limousin Single-Step BREEDPLAN														
CE	B.Wt	Milk	200 Wt	400 Wt	600 Wt	Milk	Scrotal	Carc WT	EMA	Rib Fat	Rump Fat	RBV	IMF	DOC
-0.3	3.2	11	34	55	78	11	1.1	46	4.4	0.6	1	0.6	0.4	65
37%	71%	45%	67%	67%	73%	45%	51%	51%	45%	55%	54%	47%	42%	53%

Traits Observed: CE,BWT,200WT,400WT,600WT,FAT,EMA,IMF,DOC,Genomics

The first of our S12 sons in the catalogue. A black bull that is not to be missed. He is deep bodied, he has capacity and he has volume. He also has a well rounded set of figures to back him up.

Purchaser: \$.....

4 MANDAYEN XTRA LOYAL V96 (P B AA)

Tattoo: MDNPV96

Born: 17/07/2024

Grade: Pure

Colour: Hetero Black
(by DNA test)

Horn: Hetero Polled
(by DNA test)

Proto: (PN)

MANDAYEN XTRA LOYAL P149 (MDNPP149) (PP BB AA)

MANDAYEN LONG HAUL L43 (MDNPL43) (P A U)

SIRE: MANDAYEN XTRA LOYAL S12 (PP BB U)

DAM: MANDAYEN VICTORIA P102 (P A U)

MANDAYEN JILL Q079 (MDNPQ79) (P B U)

MANDAYEN VICTORIA K47 (MDNPK47) (P B U)

December 2025 Southern Limousin Single-Step BREEDPLAN														
CE	B.Wt	Milk	200 Wt	400 Wt	600 Wt	Milk	Scrotal	Carc WT	EMA	Rib Fat	Rump Fat	RBV	IMF	DOC
3.6	1.6	16	31	47	77	16	0.5	51	1.8	-0.2	0	0.7	0.5	61
35%	71%	45%	67%	67%	72%	45%	52%	51%	45%	55%	54%	47%	42%	52%

Traits Observed: CE,BWT,200WT,400WT,600WT,FAT,EMA,IMF,DOC,Genomics

A black bull that could be considered your curve bender. A potential heifer bull that has explosive growth figures. He is long, thick and clean in the sheath. Scurred and quiet.

Purchaser: \$.....

5

MANDAYEN XTRA LOYAL V43 (P B AA)

Tattoo: MDNPV43

Born: 2/06/2024

Grade: Pure

Colour: Hetero Black
(by DNA test)

Horn: Hetero Polled
(by DNA test)

Proto: (PN)

MANDAYEN XTRA LOYAL P149 (MDNPP149) (PP BB AA)

MANDAYEN JACKAROO M81 (MDNPM81) (PP B U)

SIRE: MANDAYEN XTRA LOYAL S12 (PP BB U)

DAM: MANDAYEN KRYSTAL Q038 (P B U)

MANDAYEN JILL Q079 (MDNPQ79) (P B U)

MANDAYEN KRYSTAL K142 (MDNPK142) (H A U)

December 2025 Southern Limousin Single-Step BREEDPLAN														
CE	B.Wt	Milk	200 Wt	400 Wt	600 Wt	Milk	Scrotal	Carc WT	EMA	Rib Fat	Rump Fat	RBV	IMF	DOC
3.2	1.2	13	28	41	38	13	1.1	33	3.6	1.2	1.6	-0.1	0.2	57
37%	71%	42%	66%	66%	71%	42%	49%	49%	43%	52%	51%	45%	40%	54%

Traits Observed: GL,CE,BWT,200WT,400WT,600WT,FAT,EMA,IMF,DOC,Genomics

A black son of the ever reliable S12. He is long and clean with a strong topline and hind quarter. Quiet natured bull.

Purchaser: \$.....

6

MANDAYEN ENDEAVOUR V31 (PP B AA)

Tattoo: MDNPV31

Born: 30/05/2024

Grade: Pure

Colour: Hetero Black
(by DNA test)

Horn: Homo. Polled
(by DNA test)

Proto: (PN)

BALAMORE ENDEAVOR 701E (IMCPBLM701E) (PP BB AA)

SUMMIT PAYDAY H28 (HLGPH28) (P A U)

SIRE: MANDAYEN ENDEAVOUR S3 (PP B U)

DAM: MANDAYEN JILL M88 (P A U)

MANDAYEN KNOCKOUT Q086 (MDNPQ86) (P R U)

MANDAYEN JILL H2122 (MDNPH2122) (P A U)

December 2025 Southern Limousin Single-Step BREEDPLAN														
CE	B.Wt	Milk	200 Wt	400 Wt	600 Wt	Milk	Scrotal	Carc WT	EMA	Rib Fat	Rump Fat	RBV	IMF	DOC
-0.8	1.2	6	29	48	63	6	1.3	42	4.5	0.4	0.5	1.2	0.1	51
37%	71%	45%	66%	67%	72%	45%	49%	51%	44%	54%	53%	46%	42%	53%

Traits Observed: GL,CE,BWT,200WT,400WT,600WT,FAT,EMA,IMF,DOC,Genomics

A larger framed, later maturing bull. He is black and Homo Polled, and a potential heifer bull. He has lots of length and is clean in the sheath.

Purchaser: \$.....

7

MANDAYEN GOLD RUSH V26 (PP R AA)

Tattoo: MDNPV26

Born: 28/05/2024

Grade: Pure

Colour: Red

Horn: Homo. Polled
(by DNA test)

Proto: (PN)

B BAR AUSTIN HEALY 4D ET (PEDPUZX4D) (P R U)

MANDAYEN GUARDIAN A488 (MDNPA488) (P R AA)

SIRE: ANCHOR B GOLD RUSH 48G (PP R AA)

DAM: MANDAYEN KRYSTAL P29 (P A U)

ANCHOR B BAILEY 21B (PEDPJBH21B) (P R U)

MANDAYEN KRYSTAL M134 (MDNPM134) (PP A U)

December 2025 Southern Limousin Single-Step BREEDPLAN														
CE	B.Wt	Milk	200 Wt	400 Wt	600 Wt	Milk	Scrotal	Carc WT	EMA	Rib Fat	Rump Fat	RBV	IMF	DOC
-0.8	1.1	9	26	40	52	9	1	33	0.6	-0.5	-0.7	1.1	-0.2	25
40%	72%	50%	68%	68%	73%	50%	58%	53%	46%	56%	55%	48%	44%	60%

Traits Observed: GL,CE,BWT,200WT,400WT,600WT,FAT,EMA,IMF,DOC,Genomics

A Homo Polled son of Anchor B Gold Rush. A potential heifer option that has a sirey outlook. He is deep bodied , free moving and has great neck extension.

Purchaser: \$.....

8

MANDAYEN CARHARTT V42 (P R AA)

Tattoo: MDNPV42

Born: 2/06/2024

Grade: Pure

Colour: Red

Horn: Hetero Polled
(by DNA test)

Proto: (PN)

RPY PAYNES CRACKER 17E (IMCP17E) (PP R AA)

MANDAYEN JACKAROO J2355 (MDNPJ2355) (PP A AA)

SIRE: B-BAR CARHARTT 71H (PP R AA)

DAM: MANDAYEN WOLFETTE Q019 (P A U)

B BAR NICOLE 11D (PEDP11D) (PP B U)

MANDAYEN WOLFETTE E1494 (MDNPE1494) (P A U)

December 2025 Southern Limousin Single-Step BREEDPLAN														
CE	B.Wt	Milk	200 Wt	400 Wt	600 Wt	Milk	Scrotal	Carc WT	EMA	Rib Fat	Rump Fat	RBV	IMF	DOC
9.6	-1	5	22	32	37	5	1	40	4.3	0.8	1.2	0.4	0.1	54
42%	72%	46%	68%	68%	73%	46%	56%	53%	45%	55%	54%	47%	44%	57%

Traits Observed: GL,CE,BWT,200WT,400WT,600WT,FAT,EMA,IMF,DOC,Genomics

A potential heifer option that is in top 3% for birth weight. He combines this with neck extension, length of body and softness. He also has great thickness.

Purchaser: \$.....

9 MANDAYEN HENRY V33 (P A AA)

Tattoo: MDNPV33

Born: 30/05/2024

Grade: Pure

Colour: Apricot

Horn: Hetero Polled
(by DNA test)

Proto: (PN)

DC EVINRUDE 56E (PEDPUXJ56E) (P R U)

FLEMINGTON NEXT LEVEL N40 (FPPN40) (PP A AA)

SIRE: NEW LIFE HENRY (PP R AA)

DAM: MANDAYEN SPECIAL COOKIE R72 (P A U)

TMF MISS 3Y (PEDPTMF3Y) (P R U)

MANDAYEN SPECIAL COOKIE N40 (MDNPN40) (P A U)

December 2025 Southern Limousin Single-Step BREEDPLAN														
CE	B.Wt	Milk	200 Wt	400 Wt	600 Wt	Milk	Scrotal	Carc WT	EMA	Rib Fat	Rump Fat	RBV	IMF	DOC
0.2	0.7	6	23	41	60	6	2.2	32	0.2	0.2	0.5	-0.5	0.6	57
34%	71%	42%	66%	66%	71%	42%	48%	49%	42%	52%	51%	44%	39%	54%

Traits Observed: GL,CE,BWT,200WT,400WT,600WT,FAT,EMA,IMF,DOC,Genomics

A deep bodied bull that has length and softness. A potential heifer option that has growth figures to add. Plus a well rounded set of figures.

Purchaser: \$.....

10 MANDAYEN NEXT LEVEL V4 (PP A AA)

Tattoo: MDNPV4

Born: 19/05/2024

Grade: Pure

Colour: Apricot

Horn: Homo. Polled
(by DNA test)

Proto: (PN)

IVY'S BUBBA WATSON HTZ24B (IMCPK24) (PP A AA)

MANDAYEN COOKIE MONSTER C1006 (MDNPC1006) (P B AA)

SIRE: FLEMINGTON NEXT LEVEL N40 (PP A AA)

DAM: MANDAYEN JILL F1646 (P B U)

BIRUBI LUNETTE L81 (MATPL81) (PP A AC)

MANDAYEN JILL C858 (MDNPC858) (P B U)

December 2025 Southern Limousin Single-Step BREEDPLAN														
CE	B.Wt	Milk	200 Wt	400 Wt	600 Wt	Milk	Scrotal	Carc WT	EMA	Rib Fat	Rump Fat	RBV	IMF	DOC
0.2	3.6	8	32	49	75	8	1.7	35	0.9	0.1	0.1	0.2	0.1	60
51%	74%	59%	71%	69%	71%	59%	64%	56%	49%	60%	57%	51%	52%	67%

Traits Observed: BWT,200WT,600WT(x2),FAT,EMA,IMF,DOC,Genomics

An embryo calf by Flemington Next Level. He is Homo Polled, has a larger frame and great length. He is square in the hip and has neck extension.

Purchaser: \$.....

11 MANDAYEN NEXT LEVEL V2 (PP A AA)

Tattoo: MDNPV2

Born: 11/05/2024

Grade: Pure

Colour: Apricot

Horn: Homo. Polled
(by DNA test)

Proto: (PN)

IVY'S BUBBA WATSON HTZ24B (IMCPK24) (PP A AA)

MANDAYEN COOKIE MONSTER C1006 (MDNPC1006) (P B AA)

SIRE: FLEMINGTON NEXT LEVEL N40 (PP A AA)

DAM: MANDAYEN JILL F1646 (P B U)

BIRUBI LUNETTE L81 (MATPL81) (PP A AC)

MANDAYEN JILL C858 (MDNPC858) (P B U)

December 2025 Southern Limousin Single-Step BREEDPLAN														
CE	B.Wt	Milk	200 Wt	400 Wt	600 Wt	Milk	Scrotal	Carc WT	EMA	Rib Fat	Rump Fat	RBV	IMF	DOC
0.2	1.7	5	22	36	50	5	1.8	25	1.5	0.9	1.2	-0.7	0.3	52
51%	75%	59%	72%	70%	72%	59%	64%	57%	49%	60%	58%	52%	52%	67%

Traits Observed: BWT,200WT,600WT(x2),FAT,EMA,IMF,DOC,Genomics

Another Homo Polled embryo calf by Flemington Next Level. Like his brother, he has great length. He also has added strength of spine and is free moving.

Purchaser: \$.....

12 MANDAYEN XTRA LOYAL V53 (PP BB AA)

Tattoo: MDNPV53

Born: 4/06/2024

Grade: Pure

Colour: Homo. Black
(by DNA test)

Horn: Homo. Polled
(by DNA test)

Proto: (PN)

MANDAYEN XTRA LOYAL P149 (MDNPP149) (PP BB AA)

SUMMIT DROVER P54 (HLGPP54) (PP B AA)

SIRE: MANDAYEN XTRA LOYAL S12 (PP BB U)

DAM: MANDAYEN MAXINE T82 (P B U)

MANDAYEN JILL Q079 (MDNPQ79) (P B U)

MANDAYEN MAXINE Q047 (MDNPQ47) (P B U)

December 2025 Southern Limousin Single-Step BREEDPLAN														
CE	B.Wt	Milk	200 Wt	400 Wt	600 Wt	Milk	Scrotal	Carc WT	EMA	Rib Fat	Rump Fat	RBV	IMF	DOC
2.9	2.1	13	31	49	62	13	1.2	42	3.7	1	1.5	0.3	0.3	60
34%	71%	40%	66%	66%	71%	40%	49%	49%	43%	51%	50%	43%	39%	50%

Traits Observed: GL,CE,BWT,200WT,400WT,600WT,FAT,EMA,IMF,DOC,Genomics

The only Homo Polled AND Homo Black bull in this years draft. A larger framed bull that has depth and length. He is naturally quiet with plenty of thickness with a well balanced set of growth figures. Dont overlook this fella.

Purchaser: \$.....

13

MANDAYEN XTRA LOYAL V103 (P B AA)

Tattoo: MDNPV103

Born: 27/07/2024

Grade: Pure

Colour: Hetero Black
(by DNA test)

Horn: Hetero Polled
(by DNA test)

Proto: (PN)

MANDAYEN XTRA LOYAL P149 (MDNPP149) (PP BB AA)

WULFS COMPLIANT K687C (IMUPL687) (PP B AA)

SIRE: MANDAYEN XTRA LOYAL S12 (PP BB U)

DAM: MANDAYEN SPECIAL COOKIE R58 (P B U)

MANDAYEN JILL Q079 (MDNPQ79) (P B U)

MANDAYEN SPECIALS COOKIE Z344 (MDNPZ344) (H A U)

December 2025 Southern Limousin Single-Step BREEDPLAN														
CE	B.Wt	Milk	200 Wt	400 Wt	600 Wt	Milk	Scrotal	Carc WT	EMA	Rib Fat	Rump Fat	RBV	IMF	DOC
1	2.1	14	28	47	64	14	0.8	45	3.7	0.9	1.6	-0.1	0.5	62
39%	72%	46%	68%	64%	66%	46%	52%	47%	40%	52%	50%	42%	42%	53%

Traits Observed: CE,BWT,200WT,400WT,600WT,FAT,EMA,IMF,DOC,Genomics

This black bull is the youngest in the sale. While he still has some growing to do, he is nice and quiet and clean in the sheath. He has great length and will mature nicely.

Purchaser:

\$

14

MORRISVALE VALERIAN (P BB AA)

Tattoo: MRJPV19

Born: 7/03/2024

Grade: Pure

Colour: Homo. Black
(by DNA test)

Horn: Hetero Polled
(by DNA test)

Proto: (PN)

BALAMORE ENDEAVOR 701E (IMCPBLM701E) (PP BB AA)

MORRISVALE LADYS MAN (MRJPL8) (PP B U)

SIRE: EAST COAST HECTOR 009H (PP BB AA)

DAM: MORRISVALE CASSIE'S PROMISE (P B U)

EAST COAST FLOWER 829F (IMCPECL829F) (P B U)

DON PERIGNON CASSIE (DPSFC17) (H A U)

December 2025 Southern Limousin Single-Step BREEDPLAN														
CE	B.Wt	Milk	200 Wt	400 Wt	600 Wt	Milk	Scrotal	Carc WT	EMA	Rib Fat	Rump Fat	RBV	IMF	DOC
-0.3	0.3	9	20	34	44	9	1.6	33	4	0.2	0.4	1.1	-0.2	50
41%	71%	40%	68%	63%	64%	40%	53%	46%	35%	46%	44%	35%	36%	57%

Traits Observed: GL,CE,BWT,200WT,600WT(x2),FAT,EMA,IMF,DOC,Genomics

The first of the Morrisvale bulls. A Homo black bull by East Coast Hector. A potential heifer option that is long and moderate framed. He has thickness and a deep hind quarter, and naturally quiet.

Purchaser:

\$

15

MORRISVALE VORTEX (P B AA)

Tattoo: MRJPV16

Born: 6/03/2024

Grade: Pure

Colour: Hetero Black
(by DNA test)

Horn: Hetero Polled
(by DNA test)

Proto: (PN)

PLNS POLLED EXECUTIONER 19E (PEDP19E) (P B U)

MORRISVALE KEPT SECRET (MRJPK23) (PP A AA)

SIRE: JYF GENTRY 507G (PP B AA)

DAM: MORRISVALE NORTHERN FLAME (P R AA)

JYF BARCODE 55B (PEDP55B) (P R U)

MORRISVALE JEALOUS FLAME (MRJPJ4) (P R AA)

December 2025 Southern Limousin Single-Step BREEDPLAN														
CE	B.Wt	Milk	200 Wt	400 Wt	600 Wt	Milk	Scrotal	Carc WT	EMA	Rib Fat	Rump Fat	RBV	IMF	DOC
0.6	0	10	19	37	51	10	1.3	30	1.9	0.9	1.6	-0.4	0.5	69
38%	73%	45%	71%	66%	65%	45%	54%	47%	31%	43%	41%	33%	35%	56%

Traits Observed: BWT,200WT,600WT(x2),FAT,EMA,IMF,DOC,Genomics

A long and scurred embryo bull. Heaps of power and muscle and is early maturing. A lovely, quiet son of JYF Gentry. He has 3 full brothers at stud within Australia, and his 2 full sisters have been retained in herd. Also a potential heifer option.

Purchaser:

\$

16

MANDAYEN XTRA LOYAL V69 (PP B AA)

Tattoo: MDNPV69

Born: 15/06/2024

Grade: Pure

Colour: Hetero Black
(by DNA test)

Horn: Homo. Polled
(by DNA test)

Proto: (PN)

MANDAYEN XTRA LOYAL P149 (MDNPP149) (PP BB AA)

FLEMINGTON NEXT LEVEL N40 (FPPN40) (PP A AA)

SIRE: MANDAYEN XTRA LOYAL S12 (PP BB U)

DAM: MANDAYEN WESTON PARK S46 (P A U)

MANDAYEN JILL Q079 (MDNPQ79) (P B U)

MANDAYEN WESTON PARK F1589 (MDNPF1589) (H A U)

December 2025 Southern Limousin Single-Step BREEDPLAN														
CE	B.Wt	Milk	200 Wt	400 Wt	600 Wt	Milk	Scrotal	Carc WT	EMA	Rib Fat	Rump Fat	RBV	IMF	DOC
2.3	1.4	6	25	42	56	6	0.4	40	2.8	0.6	1	0.3	0.1	37
35%	69%	42%	66%	64%	70%	42%	50%	50%	43%	52%	51%	44%	40%	53%

Traits Observed: GL,CE,200WT,400WT,600WT,FAT,EMA,IMF,DOC,Genomics

A black, Homo Polled S12 son. A moderatley framed, baby beef bull. He is thick set, early maturing and deep bodied.

Purchaser:

\$

17

MANDAYEN CARHARTT V37 (P A AA)

Tattoo: MDNPV37

Born: 31/05/2024

Grade: Pure

Colour: Apricot

Horn: Hetero Polled
(by DNA test)

Proto: (PN)

RPY PAYNES CRACKER 17E (IMCP17E) (PP R AA)

MANDAYEN GUARDIAN A488 (MDNPA488) (P R AA)

SIRE: B-BAR CARHARTT 71H (PP R AA)

DAM: MANDAYEN LUCINDA P31 (P A U)

B BAR NICOLE 11D (PEDP11D) (PP B U)

MANDAYEN LUCINDA M82 (MDNPM82) (P A U)

December 2025 Southern Limousin Single-Step BREEDPLAN														
CE	B.Wt	Milk	200 Wt	400 Wt	600 Wt	Milk	Scrotal	Carc WT	EMA	Rib Fat	Rump Fat	RBV	IMF	DOC
8.5	-0.2	7	22	33	44	7	1.3	39	4.9	0.6	0.9	1	0.2	45
43%	72%	46%	68%	68%	73%	46%	55%	53%	46%	56%	55%	48%	45%	58%

Traits Observed: GL,CE,BWT,200WT,400WT,600WT,FAT,EMA,IMF,DOC,Genomics

A long bodied, early maturing bull with a round hind quarter. An ideal vealer bull with a clean sheath. A potential heifer option.

Purchaser: \$.....

18

MANDAYEN CARHARTT V60 (PP A AA)

Tattoo: MDNPV60

Born: 7/06/2024

Grade: Pure

Colour: Apricot

Horn: Homo. Polled
(by DNA test)

Proto: (PN)

RPY PAYNES CRACKER 17E (IMCP17E) (PP R AA)

SUMMIT DROVER P54 (HLGPP54) (PP B AA)

SIRE: B-BAR CARHARTT 71H (PP R AA)

DAM: MANDAYEN VERY SPECIAL T53 (P A U)

B BAR NICOLE 11D (PEDP11D) (PP B U)

MANDAYEN VERY SPECIAL Q026 (MDNPQ26) (P A U)

December 2025 Southern Limousin Single-Step BREEDPLAN														
CE	B.Wt	Milk	200 Wt	400 Wt	600 Wt	Milk	Scrotal	Carc WT	EMA	Rib Fat	Rump Fat	RBV	IMF	DOC
7	0.2	5	25	39	55	5	0.8	44	3.4	0.1	0.4	1	0.1	47
40%	71%	41%	67%	67%	72%	41%	54%	50%	43%	53%	51%	44%	40%	54%

Traits Observed: GL,CE,BWT,200WT,400WT,600WT,FAT,EMA,IMF,DOC,Genomics

A quiet, Homo Polled B Bar Carhartt son that is moderatley framed. He has neck extension, a clean sheath and is thick set. A potential heifer option.

Purchaser: \$.....

19

MANDAYEN NARADALE V86 (PP B AA)

Tattoo: MDNPV86

Born: 6/07/2024

Grade: Pure

Colour: Hetero Black
(by DNA test)

Horn: Homo. Polled
(by DNA test)

Proto: (PN)

MANALI FICTION F53 (MANPF53) (P BB AA)

MANDAYEN ENERGIZER E1338 (MDNPE1338) (P R AA)

SIRE: RUBY PARK NARADALE (PP BB AA)

DAM: MANDAYEN VERY SPECIAL J2454 (P A U)

OAKVALE FLOSSIE (DWRPF68) (P B AA)

MANDAYEN VERYSPECIAL E1446 (MDNPE1446) (PP A U)

December 2025 Southern Limousin Single-Step BREEDPLAN														
CE	B.Wt	Milk	200 Wt	400 Wt	600 Wt	Milk	Scrotal	Carc WT	EMA	Rib Fat	Rump Fat	RBV	IMF	DOC
0.6	1.9	10	22	30	45	10	1.4	31	3	-0.1	-0.3	1.3	-0.1	7
41%	73%	49%	69%	69%	74%	49%	55%	55%	47%	57%	56%	49%	45%	61%

Traits Observed: CE,BWT,200WT,400WT,600WT,FAT,EMA,IMF,DOC,Genomics

The only son of Ruby Park Naradale in the sale, and he is Homo Polled. A moderatley framed vealer bull that is long and thick made. With a quiet temperament and clean in the sheath.

Purchaser: \$.....



FOR A MORE SUCCESSFUL LIVESTOCK BUSINESS

At Elders we believe that Stud Stock paves the journey for commercial livestock business. We can provide tailored advice on Livestock performance and management while also offering to support your program with qualified livestock experts and auctioneers.

From innovative conception and weaning solutions to national and global marketing options, Elders can help you achieve so much more.

Tom Dennis	Branch Manager	0427 975 207
Josh Reeves	Livestock Manager	0429 170 339
Alan Thomson	Territory Sales Manager	0427 849 779
Nick Livingston	Territory Sales Manager	0439 951 288
Tom Penna	Stud Stock Marketing Manager, SA	0428 854 708
Tony Wetherall	Stud Stock Manager, SA	0427 390 001
Ross Milne	Stud Stock Manager, VIC	0408 057 558

For more information, please contact Elders Naracoorte
12-14 Moyhall Road, Naracoorte SA 5271
P. 08 8765 7800
E. naracoorte@elders.com.au



